



Inside this issue:

General Information	2
Contact Information	2
Driving Directions	3
Training Topic Key	3
Trainings at a Glance	4
On-site Trainings	5
Mark Your Calendar	6
First Aid, CPR & MAT	7
Training Opportunities	6-9
Registration	11-12
Distance Learning Information & Registration	13-14
Keep Track of Your Training Hours	15

Training & Professional Development Schedule



This Spring we have our **Training Series** in Dutchess County beginning March 26th. The complete series can be found on page 8.



We will also be having a Book Discussion Group to discuss the book "Elevating Child Care" by Janet Lansbury. The **first 10** who register **by April 15th** for the Book Discussion Group will **receive the book for free!** See page 9 for details!



We are now offering trainings in the **morning and evenings!**

In both Dutchess and Putnam County, we will be training on the **new regulations!**

In Putnam, we will also be having a **Mini-Conference!** You will be receiving a separate flyer in the mail for this conference opportunity!

Please continue to **give us your feedback** so we can provide the highest quality trainings possible!

General Information

THE SUNY EDUCATIONAL INCENTIVE PROGRAM

Scholarship funding to participate in these trainings may be available through the Educational Incentive Program (EIP). For more information, visit www.tsg.suny.edu. You may also contact EIP at eip@tsg.suny.edu or 1-800-295-9616.

REGISTRATION AND PAYMENT

Advance registration and prepayment are **required** to enroll in a training and receive a certificate. Registrations may be taken over the phone with a credit card. Register early! Most classes have limited enrollment. We reserve the right to cancel a class due to low enrollment. You may call Rosemarie at (845) 473-4141 ext. 217 to register.

THE COUNCIL RESERVES THE RIGHT TO REFUSE LATE ARRIVALS AND/OR TO ADJUST TRAINING CERTIFICATES TO REFLECT LATE ARRIVAL. WE ALSO RESERVE THE RIGHT TO REQUIRE APPROPRIATE PARTICIPATION IN ALL TRAININGS.

CREDITS, REFUNDS, & CANCELLATIONS

No credits or refunds will be issued without at least 24 hours notice. If classes are cancelled by the Council due to low enrollment, refunds will be given.

CHILDREN

Workshops are not appropriate environments for children of any age. The presence of children, including babies, is very distracting. We do not provide child care on-site, nor can we allow children to be unsupervised outside the training room.

PLEASE DO NOT BRING CHILDREN WITH YOU!

COUNCIL MEMBERSHIP

Members of the Child Care Council receive a discount on most trainings. If you are not a member and would like information, please call Nancy at (845) 473-4141 ext. 210.

Contact Information

DUTCHESS COUNTY

(845) 473-4141

Executive Director

Jeanne Wagner - 213

Assistant Director

Marion Eagen - 223

Financial Manager

Melinda Cirillo - 211

Clerk/Secretary

Nancy Owen - 214

Registration Supervisor

Stacey Rosborough - 226

Registrars

Carol Taylor - 218

LaRae Klay - 224

Jessica Harnish - 215

Darla Fulmer - 216

Rosemarie Lawton - 217

Legally Exempt

Coordinator

Karen Walsh - 222

Child Care Referral

Service

Pat Isbirian - 221

CACFP Coordinator

Lorraine Scuccimarra - 220

Health Care Consultant

Valerie James - 231

Training Coordinator/ Infant & Toddler Specialist

Rosemarie Lawton - 217

PUTNAM COUNTY

(845) 808-1659

Family Day Care/School Age Child Care

Registrar:

Barbara Garbarino - 1

Early Childhood Specialist

Mary Schreiber - 2

PUTNAM COUNTY

DAY CARE SERVICES

(845) 808-1500

Kim Wolfe - 45260

Dawn Haecker - 45304



Driving Directions

From Taconic Parkway Route 55 West

Drive 6.1 miles to Burnett Blvd. Turn right onto Burnett Blvd. Then make a quick right onto Overocker Road. On right hand side you will see blue and white Exit Only sign. Entrance sign "Abilities First" is a few houses beyond. We're in the first building.

From Taconic Parkway/Route 44 West

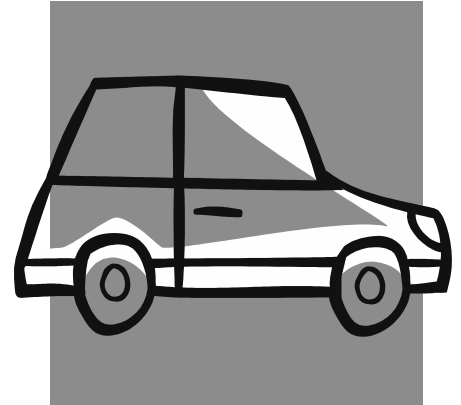
Make a left turn onto Overocker Road (between two gas stations). Proceed past playground area on right (with long chain fence). Two houses past Earl Court make left at "Abilities First" entrance sign. We are in the first building.

From Southern Dutchess/Route 9

After passing Beechwood Avenue on the right, bear to the right to South Avenue. Follow signs to Academy Street. Stay on Academy Street until 44/55 East (Church Street). Take Route 44/55 to where they split. Stay in left lane and take Route 44 to Burnett Blvd. (Planet Wings & K-Mart on left) Make right turn onto Burnett Blvd. Then take only left onto Overocker Road. On right hand side you will see blue and white Exit Only sign. Entrance sign "Abilities First" is a few houses beyond. We're in the first building.

From Mid-Hudson Bridge

Take Route 44/55 (Church Street) to where they split. Stay in left lane and take Route 44 to Burnett Blvd. (Planet Wings & K-Mart on left) Make right turn onto Burnett Blvd. Then take only left onto Overocker Road. On right hand side you will see blue and white Exit Only sign. Entrance sign "Abilities First" is a few houses beyond. We're in the first building.



Training Topic Key

OCFS TOPICS KEY:

- | | | |
|--|--|---|
| 1. Principles of Early Childhood Education | 2. Nutrition and Health Needs of Children | 3. Child day care program development |
| 4. Safety and Security Procedures | 5. Business Record Maintenance and Management | 6. Child Abuse and Maltreatment |
| 7. Statutes and Regulations Pertaining to Child Day Care | 8. Statutes and Regulations Pertaining to Child Abuse and Maltreatment | 9. The Education and Information on the Identification, Diagnosis, and Prevention of Shaken Baby Syndrome |

CDA FUNCTION AREAS:

- | | | | | | | |
|---------|------------|--------------------------|--------------|------------------------|---------------------|-------------|
| 1. Safe | 2. Healthy | 3. Learning Environments | 4. Physical | 5. Cognitive | 6. Communication | 7. Creative |
| 8. Self | 9. Social | 10. Guidance | 11. Families | 12. Program Management | 13. Professionalism | |

CORE BODY OF KNOWLEDGE (CBK) KEY:

- | | | | | | | |
|---------------------------------|---------------------------------------|-------------------------------|-------------------------------|----------------------------------|-----------------------------------|----------------------------------|
| 1. Child Growth and Development | 2. Family and Community Relationships | 3. Observation and Assessment | 4. Environment and Curriculum | 5. Health, Safety, and Nutrition | 6. Professionalism and Leadership | 7. Administration and Management |
|---------------------------------|---------------------------------------|-------------------------------|-------------------------------|----------------------------------|-----------------------------------|----------------------------------|

Trainings at a Glance

February 2015

Sun	Mon	Tue	We	Thu	Fri	Sat
1	2	3	4	5	6	7
8	9	10	11	12	13	14
15	16	17	18	19	20	21
22	23	24	25	26	27	28

March 2015

Sun	Mon	Tue	We	Thu	Fri	Sat
1	2	3	4	5	6	7
8	9	10	11	12	13	14
15	16	17	18	19	20	21
22	23	24	25	26	27	28
29	30	31				

April 2015

Sun	Mon	Tue	We	Thu	Fri	Sat
			1	2	3	4
5	6	7	8	9	10	11
12	13	14	15	16	17	18
19	20	21	22	23	24	25
26	27	28	29	30		

May 2015

Sun	Mon	Tue	We	Thu	Fri	Sat
					1	2
3	4	5	6	7	8	9
10	11	12	13	14	15	16
17	18	19	20	21	22	23
24	25	26	27	28	29	30
31						

June 2015

Sun	Mon	Tue	We	Thu	Fri	Sat
	1	2	3	4	5	6
7	8	9	10	11	12	13
14	15	16	17	18	19	20
21	22	23	24	25	26	27
28	29	30				

Date

February 2015

Page

21	Medication Administration Training	7
23	The New Regulations Have Arrived! (DCC/SACC only)	9
25	Council Cluster (FDC/GFDC only)	6
26	Dutchess Directors' Network	6

Date

March 2015

Page

2	The New Regulations Have Arrived! (DCC/SACC only)	9
11	Putnam & Dutchess Directors' Group	6
26	Communicating with Parents	8
30	Part 1: The New Regulations Have Arrived! Part 2: Recognizing Signs of Abuse, Maltreatment and Shaken Baby Syndrome	8
31	Sneaking Science into Your Early Childhood Program	8

Date

April 2015

Page

1	Sing a Song All Year Long	8
2	Understanding Autism Spectrum Disorders	8
11	Medication Administration Training	7
11	Putnam Mini-Conference	6
30	OCFS Video Conference	6

Date

May 2014

Page

4	Oh, How They Grow! Understanding Infant and Toddler Development	9
9	Medication Administration Training	7
18	I ♥ STEM!	9
21	OCFS Video Conference	6
27	Council Cluster (FDC/GFDC only)	6

Date

June 2014

Page

1	Book Discussion - Elevating Child Care	9
18	OCFS Video Conference	6
20	Medication Administration Training	7
24	Freedom of Movement	9

We will bring the training to you!

Now is your chance to have any training of your choice!

You tell us what type of training you want and we will bring it to you!

Frequently requested topics:

- Understanding the Common Core
- Communicating with Parents
- New and Exciting Activities
- Transitions
- Gardening with Children
- Children's Behaviors
- Special Needs



ACCORDING TO PROVIDERS LIKE YOU...

"I think that the on-site trainings are great with my busy schedule. I can get the hours needed and at my convenience. They are very informative and I can also make sure that my staff gets the hours they need, so we all are in compliance." Debra, GFDC, Beacon

"Trainers are informative, engaging, personable, and easily approachable when staff ask questions or want to make comments about the subject being discussed. They put forth a lot of energy in their approach and one can tell that they do their "homework" and are prepared before any presentation!" Ann, DCC, Rhinebeck

"We prefer to have our trainings on-site through the Council. The trainers show and demonstrate knowledge and experience to help bring the staff to a higher level of understanding and competency for the topic being discussed. The staff has an opportunity to build a relationship with the trainers and can benefit from that relationship better than taking an online class or video. It is through these trainings that my staff can share experiences with each other and talk about conflicts in their personal careers to resolve problems and better their individual classrooms. It is so comfortable for our staff to have trainings in our own school and our own environment. The trainings are always offering a hands on opportunity for learning experiences that really allow the staff to relate to the topics being discussed." Jennifer, DCC, Cold Spring

On-site Training Fees:

2 hours of training
8 or more people: \$20/person
5-8 people: \$150.00

**Contact Rosemarie for
more information:**

(845) 473-4141 ext. 217

For You

50% off

LIMITED TIME OFFER!

*Schedule your first 2 hour on-site training
and receive your second 2 hour on-site training
for 50% off!*

Offer Expires: 12/31/15



Mark Your Calendars!

Dutchess County Directors' Network

February 26, 2015, 1:30-3:00pm
Community Family Development
269 Mill St. Poughkeepsie

Contact Jeanne: (845) 473-4141 ext. 213 or
jwagner@childcaredutchess.org

Family & Group Family Day Care Council Cluster **FREE!**

February 25 May 27
August 26 December 2

For more information or to register
Contact Carol
(845) 473-4141 ext. 218

Upcoming

Video Conferences

April 30 May 21
June 18 September 3
October 22 November 19

FREE!

For more information visit:

[http://www.ecetp.pdp.albany.edu/
videoconferencing.shtm](http://www.ecetp.pdp.albany.edu/videoconferencing.shtm)

Locations:

Dutchess Office	Putnam Office
70 Overocker Rd. Poughkeepsie	110 Old Route 6, Carmel

Putnam Mini-Conference

April 11, 2015, 8:30am-12:30pm
Location To Be Announced
Look for Registration in the mail!

On-Line Training Opportunities

To Register:

smarthorizons.org/naccrra/ccdp

Got Questions?

1-800-261-6248

info@smarthorizons.org



Putnam and Dutchess Directors' Group

For DCC and SACC Directors
March 11, 2015, 1:00-3:00pm

Trainer: Mary Schreiber **Fee:** \$10

In this meeting, we will view the film: Raising Cain. We will then discuss the social and emotional challenges boys encounter in school, and share ideas about how we can help boys develop emotional awareness and empathy.

Contact Rosemarie, (845) 473-4141 ext. 217 to register

First Aid/CPR Training

**National
Safety Council
Free Training**

(518) 438-2365

www.safetycouncilny.com

American Red Cross

(845) 471-0200

www.redcross.org

American Heart Association

(845) 485-4703

www.heart.org

Steven Celestri

(914) 906-8364

www.SavingLivesCPR.net

David Cosmo

(845) 224-6355

www.CPRDave.com

Health Quest

(845) 475-9742

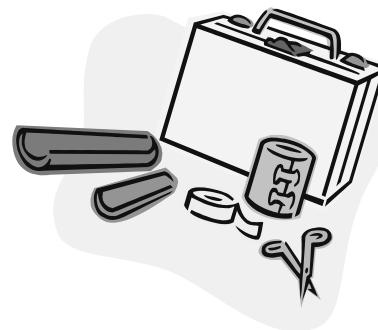
www.health-quest.org

CPR Ed

(914) 497-8998

www.cpred.com

tom@cpred.com



Medication Administration Training

Training Location:

70 Overocker Road, Poughkeepsie NY 12603

February 21, 2015, 8:30-5:00pm

May 9, 2015, 8:30-5:00pm

April 11, 2015, 8:30-5:00pm

June 20, 2015, 8:30-5:00pm



OCFS Topics: 2, 4, 7

MAT is also available in an Independent Study format!

If you are interested in obtaining more information on

MAT training, please call Valerie James, (845) 473-4141 ext. 231

**15 hours of
training!**

Spring Training Series

**All 9 OCFS
Topic Areas**

Location:

Dutchess Office, 70 Overocker Rd. Poughkeepsie

March 26, 2015, 6:30-9:30pm

Communicating with Parents: Turning Difficult Conversations into Positive Outcomes

Trainer: Shelley Squires-Trani

OCFS: 3, 4 **CDA:** 11 **CBK:** 2

This workshop will focus on some key strategies and helpful tips on how to talk to and listen to parents and families. Using scenarios, participants will engage in small and large group discussions in order to learn how to effectively communicate with parents and families.

March 30, 2015, 6:30-9:30pm

Part 1: The New Regulations Have Arrived!

Trainer: SVRO Staff and Council Registrars

OCFS: 5, 7 **CDA:** 12 **CBK:** 6, 7

All Day Care Providers are invited to bring their regulation questions for discussion with Registrars and an OCFS Licensing Supervisor.

If you choose to attend only Part 1, the fee is \$10.

Part 2: Recognizing Signs of Abuse, Maltreatment and Shaken Baby Syndrome

Trainer: Darla Fulmer, NYS Early Learning Credentialed Trainer

OCFS: 6, 8, 9 **CDA:** 1 **CBK:** 5

Learn the signs and indicators of abuse, maltreatment and shaken baby syndrome.

If you choose to attend only Part 2, the fee is \$10.

March 31, 2015, 6:30-9:30pm

Sneaking Science into Your Early Childhood Program

Trainer: Arlene Rider, PhD, NYS Early Learning Credentialed Trainer

OCFS: 3 **CDA:** 3 **CBK:** 4

Why do birds fly? Why does it rain? Enhance your early childhood program with science activities and open the door for children's curiosity and problem-solving skills.

April 1, 2015, 6:30-9:30pm

Sing a Song All Year Long

Trainer: Natalie Vecchione, NYS Approved Content Specialist Trainer

OCFS: 3 **CDA:** 7 **CBK:** 4

This interactive workshop will celebrate a calendar year full of monthly, seasonal and holiday themes! Resources for props, song ideas and holiday activity suggestions will also be provided.

April 2, 2015, 6:30-9:30pm

A Provider's Guide to Autism Spectrum Disorders

Trainer: Lauré Schnackenberg

OCFS: 1, 2 **CDA:** 13 **CBK:** 1, 5

This training will provide an overview of autism spectrum disorders, patterns of onset, effective interventions, evidenced based treatments, community resources, and successfully assisting the parents to navigate the education system and supporting the caregivers.

Infant Toddler *ONLY \$10!*

May 4, 2015, 6:30-8:30pm

Oh, How They Grow! Understanding Infant Toddler Development

Trainer: Rosemarie Lawton

OCFS: 1, 3 **CDA:** 3, 4, 5, 6, 7 **CBK:** 1

During this training we will discuss the developmental milestones of infants and toddlers. Time will also be spent discussing strategies for fostering the infant and toddler's development through everyday activities.

June 1, 2015, 6:30-8:30pm

Book Discussion—Elevating Child Care: A Guide to Respectful Parenting, by Janet Lansbury

Trainer: Rosemarie Lawton

OCFS: 1, 3 **CDA:** 8, 9, 10 **CBK:** 1

Janet Lansbury's advice is inspired by the pioneering parenting philosophy of her friend and mentor, Magda Gerber. Janet's influential voice encourages parents and child care professionals to perceive babies as unique, capable human beings with natural abilities to learn.

Read her inspiring words and come prepared to share your thoughts!

**The first 10 who register by April 15th
will receive the book for free!**

Regulations

ONLY \$10!

The New Regulations Have Arrived! DCC/SACC Regulations

Trainer: Registrars & SVRO Licensing Supervisor

OCFS: 5, 7 **CDA:** 12 **CBK:** 6, 7

Day Care Center and School Age Child Care Providers are invited to bring their regulation questions for discussion with Registrars and an OCFS Licensing Supervisor.

February 23, 2015, 6:30-8:30pm

Location: Dutchess Office,
70 Overocker Rd. Poughkeepsie

March 2, 2015, 6:30-8:30pm

Location: Putnam Office,
110 Old Route 6, Bldg. 3, Carmel

Appropriate Activities

May 18, 2015, 10:00am-12:00pm

I ♥ STEM!

Trainer: Rosemarie Lawton

OCFS: 3 **CDA:** 5 **CBK:** 4

STEM—Science, Technology, Engineering and Technology can be taught with play throughout the preschool classroom in fun and interesting ways. This workshop will give hands-on experiences for you to examine and fall in love with STEM while also meeting NYS Standards for Learning.

June 24, 2015, 10:00am-12:00pm

Freedom of Movement

Trainer: Rosemarie Lawton

OCFS: 3 **CDA:** 3, 4 **CBK:** 4

"The brain cannot absorb, what the bottom cannot endure!"

Though it sounds funny, it is also true! Children (and adults!) learn best through movement. This workshop will explain why it is so important to keep children of all ages in motion and will provide fun activity ideas for you to try in your program.



**Find more
regulations
training
on page 8!**

A Moving Infant is a Learning Infant

Gross motor development is closely linked to thinking, social, and emotional development. Freedom of movement allows babies to manipulate their bodies in any way and at any time.

Freedom of Movement Checklist

Safety is the number one concern when caring for infants and children. If you need to use an infant container, do so with limited amounts of time. Best practices suggest no more than ten minutes if not eating, riding in the car, or for other safety measures.

- ☐ Dedicate a special spot in your home that is specifically arranged for the baby to move freely, if not the whole space
- ☐ Have clean floors that are free of any safety hazards such as items that may be a choking hazard and dirt
- ☐ Place a clean blanket, mat or sheet on the floor to place baby on
- ☐ Try arranging furniture in ways that would prevent people and younger animals from stepping on baby
- ☐ Play yards and gates can help create a special safe place for non-mobile babies



LEARN MORE!

"Freedom of Movement"

June 24, 2015,

10:00am-12:00pm

See page 9 for details!



LEARN MORE!

Meet one of the authors!
Arlene Rider, PhD

"Sneaking Science into your
Early Childhood Program"

March 31, 2015

6:30-9:30pm

See page 8 for details!

The Wisdom of Grandmothers: How Babies Learn

Who would argue that grandmothers know best when it comes to caring for children? But are their voices being drowned out by the bombardment of new products that claim to be essential for infants' learning and development? Do infants really need all those commercial constraints and flashing lights in order to receive "sensory stimulation?" Grandmothers always said infants just need their fingers, toes, and some undivided attention from their caregiver. If we know that infants learn through exploration and movement, why are there more bouncers, activity chairs, and other "container apparatus" being sold than ever before?

Join us in congratulating two local grandmothers, Arlene Rider and Lois Ingellis, who co-authored an article discussing how babies learn. You can read their article on the Community Playthings blog: <http://www.communityplaythings.com/resources/articles/2015/how-babies-learn>

Registration Form

Name of Program

Name of Participants

Name of Participants

Address

City, State

Zip code

Phone Number

Are you a member of the Council?

- ☐ Yes, I'm a Member!
- ☐ I want to renew my membership
- ☐ I want to become a member!

Child Care Provider Memberships *

- ☐ \$75 child care centers or school age program licensed for 50 or more children (each site)
- ☐ \$50 child care centers or school age program licensed for fewer than 50 children (each site)
- ☐ \$30 family and group family child care homes
- ☐ \$25 student/CDA, SACC Credential holder/Council Food Program Participant

*Rates based on rolling annual cycle i.e. join in March 2015, membership expires March 2016.



Method of Payment

Total Amount Due:

☐ Cash

☐ Money Order

☐ VISA

☐ Master Card

☐ Discover

☐ Check # ____: Make payable to Child Care Council of Dutchess and Putnam

Credit Card#

Exp. date

3 digit code

Name on the Card

Signature

Today's Date



Spring 2015 Dutchess County Training Series

Date	Workshop	Member	Non-Member	Participant Last Name(s)
March 26, March 30-April 2	DUTCHESS Full Series	\$100	\$110	
Or circle specific dates: 3/26 3/30 3/31 4/1 4/2	DUTCHESS Training Series Individual Nights	\$20	\$25	
3/30	Part 1 only: The New Regulations Have Arrived	\$10	\$10	
3/30	Part 2 only: Recognizing Signs of Abuse	\$10	\$10	

Dutchess County Trainings

Date	Training Title	Location	Fee	Participant Last Name(s)
2/23/15 6:30-8:30pm	The New Regulations Have Arrived! DCC/SACC only	Dutchess Office 70 Overocker Rd. Poughkeepsie	\$10	
5/4/15 6:30-8:30pm	Oh, How They Grow! Infant Toddler Development	Dutchess Office 70 Overocker Rd. Poughkeepsie	\$10	
5/18/15 10:00am-12:00pm	I ♥ STEM!	Dutchess Office 70 Overocker Rd. Poughkeepsie	\$25	
6/1/15 6:30-8:30pm	Book Discussion Group: Elevating Child Care	Dutchess Office 70 Overocker Rd. Poughkeepsie	\$10	
6/24/15 10:00am-12:00pm	Freedom of Movement	Dutchess Office 70 Overocker Rd. Poughkeepsie	\$25	
Circle date: 2/21 4/11 5/9 6/20	Medication Administration Training	Dutchess Office 70 Overocker Rd. Poughkeepsie	\$150	

Putnam County Trainings

Date	Training Title	Location	Fee	Participant Last Name(s)
3/2/15 6:30-8:30pm	The New Regulations Have Arrived! DCC/SACC only	Putnam Office, 110 Old Route 6, Bldg. 3, Carmel	\$10	
3/11/15 1:00-3:00pm	Putnam & Dutchess Director's Meeting	Putnam Office, 110 Old Route 6, Bldg. 3, Carmel	\$10	

Distance Learning

Primary Caregiving and Continuity of Care

Training time: 1 hour

Topic: 1 **Fee:** \$15

Because babies and toddlers learn in the context of one-on-one relationships, the most important ingredient in high quality child care is the relationship between the caregiver and the child and his or her family.

Planning Transitions to Prevent

Challenging Behaviors

Training time: 1 hour

Topics: 1, 3, 4 **Fee:** \$15

Over the past decade, there has been a significant rise in the number of children in child care settings. As a result of this trend, child care providers have become more concerned about children with challenging behaviors and the effects of those behaviors on others in the classroom. This training will discuss some techniques to try to prevent some of these challenging behaviors.

The Wisdom of Play

Training time: 1 hour

Topic: 1 **Fee:** \$15

For young children in particular, play is a fundamental mode of learning. This workshop will discuss the importance of play and what children learn from play.

Regulations Scavenger Hunt

Training Time: 1 hour

Topic: 7, 8 **Fee:** \$15

Instead of listening to us tell you about the regulations, you get to show us how much you know in this Regulations Scavenger Hunt!

Child Abuse and Maltreatment Identification and Prevention

Training time: 2 hours

Topics: 6, 8 **Fee:** \$25

This workshop will cover necessary information on the subject of Child Abuse and Maltreatment and your role as a mandated reporter.

What Every Child Care Provider Should Know About Sudden Infant Death Syndrome

Training Time: 2 hours

Topics: 1, 2, 4, 7 **Fee:** \$25

Research on sudden unexpected infant death has led to both regulations and new recommendations about safe sleep. When you care for babies, understanding this information is important not only for your own practices, but so you can share the information with parents and other people in babies' lives.

Developing a Marketing Plan

Training Time: 2 hours

Topic: 5 **Fee:** \$25

Owning and operating a child care business can be a very challenging and rewarding career. Success in this field requires dedication, love, patience and business skills. This training will assist you in developing a marketing plan so that you can help your business grow and be successful.



Distance Learning

Training Title	Fee	Participant Last Name(s)
Primary Caregiving and Continuity of Care	\$15	
Planning Transitions to Prevent Challenging Behavior	\$15	
Regulations Scavenger Hunt Circle one: FDC GFDC DCC SACC	\$15	
Wisdom of Play	\$15	
Child Abuse and Maltreatment	\$25	
What Every Child Care Provider Should Know About Sudden Infant Death Syndrome	\$25	
Developing a Marketing Plan	\$25	

We're on the web!

www.childcaredutchess.org

Find us on

facebook



Child Care Council
of Dutchess and Putnam, Inc.

70 Overocker Road
Poughkeepsie, NY 12601

110 Old Route 6, Building 3
P.O. Box 1029
Carmel, NY 10512

Phone: 845-473-4141

Fax: 845-473-4161

Toll Free: 888-288-4148

E-mail:

info@childcaredutchess.org

**"The Child Care Council of Dutchess and Putnam, Inc.
works to promote affordable and quality child care,
provide information and support to families,
and strengthen the early childhood workforce in
Dutchess and Putnam Counties."**



**Are you looking to advance in
your professional career?**

Consider National Accreditation Programs!

For more information visit:

<http://earlychildhood.org/links/programs.cfm>