

Connecting Communities & Children

Child Care Council of
Dutchess and Putnam, Inc.

70 Overocker Road
Poughkeepsie, NY 12601

110 Old Route 6, Building 3
P.O. Box 1029
Carmel, NY 10512

Phone: 845-473-4141
Fax: 845-473-4161
Toll Free: 888-288-4148
E-mail:
info@childcaredutchess.org



Child Care Council of Dutchess and Putnam, Inc.
70 Overocker Road
Poughkeepsie, NY 12603

"The Child Care Council of Dutchess and Putnam, Inc. works to promote affordable and quality child care, provide information and support to families, and strengthen the early childhood workforce in Dutchess and Putnam Counties."



We're on the web!
www.childcaredutchess.org

Find us on 

Follow us on 



Inside this issue:

General Information	2
Contact Information	2
Driving Directions	3
Mark Your Calendar	4
Training Topic Key	4
Onsite and Online Trainings	5
Training Opportunities	6-7
First Aid, CPR, MAT and more	8
Registration Form	9-10
Distance Learning	11



Training & Professional Development Schedule



Welcome to the Summer 2014 Training and Professional Development Schedule!

Happy Summer!

This Summer, we have scheduled our Summer Training Week, and several other trainings in both Dutchess and Putnam Counties.

You will be receiving a flyer soon for an upcoming Saturday Conference on September 20th!

Please continue to give us your feedback so we can provide the highest quality trainings possible!

General Information

THE SUNY EDUCATIONAL INCENTIVE PROGRAM

Scholarship funding to participate in these trainings may be available through the Educational Incentive Program (EIP). For more information, visit www.tsg.suny.edu. You may also contact EIP at eip@tsg.suny.edu or 1-800-295-9616.

REGISTRATION AND PAYMENT

Advance registration and prepayment are **required** to enroll in a training and receive a certificate. Registrations may be taken over the phone with a credit card. Register early! Most classes have limited enrollment. We reserve the right to cancel a class due to low enrollment. You may call Rosemarie at (845) 473-4141 ext. 217 to register.

THE COUNCIL RESERVES THE RIGHT TO REFUSE LATE ARRIVALS AND/OR TO ADJUST TRAINING CERTIFICATES TO REFLECT LATE ARRIVAL. WE ALSO RESERVE THE RIGHT TO REQUIRE APPROPRIATE PARTICIPATION IN ALL TRAININGS.

CREDITS, REFUNDS, & CANCELLATIONS

No credits or refunds will be issued without at least 24 hours notice. If classes are cancelled by the Council due to low enrollment, refunds will be given.

CHILDREN

Workshops are not appropriate environments for children of any age. The presence of children, including babies, is very distracting. We do not provide child care on-site, nor can we allow children to be unsupervised outside the training room.

PLEASE DO NOT BRING CHILDREN WITH YOU!

COUNCIL MEMBERSHIP

Members of the Child Care Council receive a discount on most trainings. If you are not a member and would like information, please call Nancy at (845) 473-4141 ext. 210.

Contact Information

DUTCHESS COUNTY (845) 473-4141

Executive Director Jeanne Wagner - 213	Assistant Director Marion Eagen - 223
Financial Manager Melinda Cirillo - 211	Child Care Referral Service Pat Isbirian - 221
Clerk/Secretary Nancy Owen - 214	CACFP Coordinator Lorraine Scuccimarra -220
Registration Supervisors Peggy Paparone - 215 Stacey Rosborough - 226	Health Care Consultant & MAT Consultant Elizabeth Hargraves - 231
Registrars Carol Taylor - 218 LaRae Klay - 224 Darla Fulmer - 216	Training Coordinator & Infant/Toddler Specialist Rosemarie Lawton - 217
Legally Exempt Coordinator Karen Walsh - 222	

PUTNAM COUNTY (845) 808-1659

**Family Day Care/
School Age Child Care Registrar:**
Barbara Garbarino - 3

Early Childhood Specialist
Mary Schreiber - 2

PUTNAM COUNTY DAY CARE SERVICES (845) 808-1500

Kim Wolfe - 45260
Dawn Haecker - 45304



Distance Learning

Primary Caregiving and Continuity of Care

Hours: 1 **OCFS:** 1 **Fee:** \$15

Because babies and toddlers learn in the context of one-on-one relationships, the most important ingredient in high quality child care is the relationship between the caregiver and the child and his or her family.

Planning Transitions to Prevent

Challenging Behaviors

Hours: 1 **OCFS:** 1, 3, 4 **Fee:** \$15

Over the past decade, there has been a significant rise in the number of children in child care settings. As a result of this trend, child care providers have become more concerned about children with challenging behaviors and the effects of those behaviors on others in the classroom. This training will discuss some techniques to try to prevent some of these challenging behaviors.

The Wisdom of Play

Hours: 1 **OCFS:** 1 **Fee:** \$15

For young children in particular, play is a fundamental mode of learning. This workshop will discuss the importance of play and what children learn from play.

Regulations Scavenger Hunt

Hours: 1 **OCFS:** 7, 8 **Fee:** \$15

Instead of listening to us tell you about the regulations, you get to show us how much you know in this Regulations Scavenger Hunt!

Child Abuse and Maltreatment Identification and Prevention

Hours: 2 **OCFS:** 6, 8 **Fee:** \$25

This workshop will cover necessary information on the subject of Child Abuse and Maltreatment and your role as a mandated reporter.

What Every Child Care Provider Should Know About Sudden Infant Death Syndrome

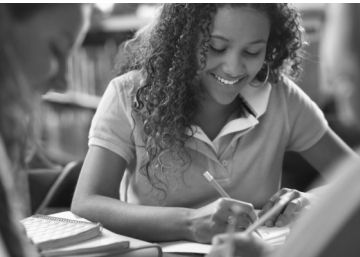
Hours: 2 **OCFS:** 1, 2, 4, 7 **Fee:** \$25

Research on sudden unexpected infant death has led to both regulations and new recommendations about safe sleep. When you care for babies, understanding this information is important not only for your own practices, but so you can share the information with parents and other people in babies' lives.

Developing a Marketing Plan

Hours: 2 **OCFS:** 5 **Fee:** \$25

Owning and operating a child care business can be a very challenging and rewarding career. Success in this field requires dedication, love, patience and business skills. This training will assist you in developing a marketing plan so that you can help your business grow and be successful.



Page 10

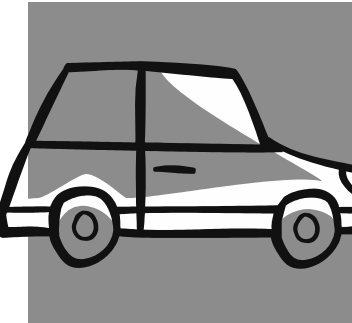
Training and Professional Development Schedule

Date	Workshop	Member	Non-Member	Participant Last Name(s)	
Spring 2014 Training Week					
July 21-25, 2014	DUTCHESS Full Week	\$100	\$110		
Or circle specific dates: 7/21 7/22 7/23 7/24 7/25	DUTCHESS Training Week Individual Nights	\$20	\$25		
Additional Trainings					
Date	Training Title	Location	Fee	Participant Last Name(s)	
7/8	SUNY Empire State College Information Session	Child Care Council -- Dutchess Office 70 Overocker Rd. Poughkeepsie	\$10		
7/8	Creative Art Experiences for Children	Lake Carmel Arts Center 640 Route 52, Kent Lakes	\$25		
8/4	The Building Blocks to a Strong Language Foundation	Child Care Council -- Dutchess Office 70 Overocker Rd. Poughkeepsie	\$10		
8/6	Positive and Effective Behavior Management	St. Lawrence O'Toole Church, 31 Prospect Street · Brewster, NY 10509	\$25		
8/23	Medication Administration Training	Child Care Council -- Dutchess Office 70 Overocker Rd. Poughkeepsie	\$150		
Distance Learning					
Training Title	Fee	Participant Last Name(s)	Training Title	Fee	Participant Last Name(s)
Primary Caregiving and Continuity of Care	\$15		Child Abuse and Maltreatment	\$25	
Planning Transitions to Prevent Challenging Behavior	\$15		SIDS	\$25	
Regulations Scavenger Hunt Circle one: FDC GFDC DCC SACC	\$15		Developing a Marketing Plan	\$25	
Wisdom of Play	\$15				

Driving Directions

From Taconic Parkway Route 55 West

Drive 6.1 miles to Burnett Blvd. Turn right onto Burnett Blvd. Then make a quick right onto Overocker Road. On right hand side you will see blue and white Exit Only sign. Entrance sign “Abilities First” is a few houses beyond. We’re in the first building.



From Taconic Parkway/Route 44 West

Make a left turn onto Overocker Road (between two gas stations). Proceed past playground area on right (with long chain fence). Two houses past Earl Court make left at “Abilities First” entrance sign. We are in the first building.



From Southern Dutchess/Route 9

After passing Beechwood Avenue on the right, bear to the right to South Avenue. Follow signs to Academy Street. Stay on Academy Street until 44/55 East (Church Street). Take Route 44/55 to where they split. Stay in left lane and take Route 44 to Burnett Blvd. (Planet Wings & K-Mart on left) Make right turn onto Burnett Blvd. Then take only left onto Overocker Road. On right hand side you will see blue and white Exit Only sign. Entrance sign “Abilities First” is a few houses beyond. We’re in the first building.

From Mid-Hudson Bridge

Take Route 44/55 (Church Street) to where they split. Stay in left lane and take Route 44 to Burnett Blvd. (Planet Wings & K-Mart on left) Make right turn onto Burnett Blvd. Then take only left onto Overocker Road. On right hand side you will see blue and white Exit Only sign. Entrance sign “Abilities First” is a few houses beyond. We’re in the first building.



Mark Your Calendars!

Putnam Early Education Partnership (PEEP) Conference

September 20, 2014, 8:30-12:30pm

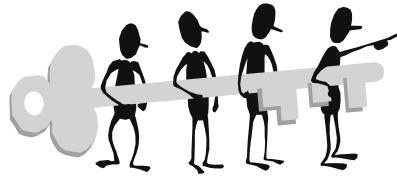
Fee: \$15

Contact Rosemarie: (845) 473-4141 ext. 217

FALL TRAINING SERIES

October 6, 7, 8, 14, 17

6:30-9:30pm



Training Topic Key

OCFS TOPICS KEY:

1. Principles of Early Childhood Development * 2. Nutrition and Health Needs of Children
3. Child Day Care Program Development * 4. Safety and Security Procedures * 5. Business Record Maintenance and Management * 6. Child Abuse and Maltreatment Identification and Prevention
7. Statutes and Regulations Pertaining to Child Day Care * 8. . Statutes and Regulations Pertaining to Child Abuse and Maltreatment * 9. The Education and Information on the Identification, Diagnosis, and Prevention of Shaken Baby Syndrome

CDA FUNCTION AREAS:

1. Safe * 2. Healthy * 3. Learning Environments * 4. Physical, * 5. Cognitive
6. Communication * 7. Creative * 8. Self * 9. Social * 10. Guidance * 11. Families
12. Program management * 13. Professionalism

CORE BODY OF KNOWLEDGE (CBK) KEY:

1. Child Growth and Development * 2. Family and Community Relationships * 3. Observation and Assessment * 4. Environment and Curriculum * 5. Health, Safety and Nutrition
6. Professionalism and Leadership * 7. Administration and Management

Registration Form

Name of Program

Name of Participants

Name of Participants

Address

City, State

Zip code

Phone Number

Are you a member of the Council?

- ☐ Yes, I'm a Member!
☐ I want to renew my membership
☐ I want to become a member!

Child Care Provider Memberships *

- ☐ \$75 child care centers or school age program licensed for 50 or more children (each site)
☐ \$50 child care centers or school age program licensed for fewer than 50 children (each site)
☐ \$30 family and group family child care homes
☐ \$25 student/CDA, SACC Credential holder/Council Food Program Participant

*Rates based on rolling annual cycle i.e. join in March 2014, membership expires March 2015.



Method of Payment

Total Amount Due:

☐ Cash

☐ VISA

☐ Check # ____: Made payable to Child Care Council of Dutchess and Putnam

☐ Money Order

☐ Master Card

☐ Discover

Credit Card#

Exp. date

3 digit code

Name on the Card

Signature

Today's Date



Family & Group Family Day Care

Council Cluster

SAVE THE DATES!

FREE!

August 27, 2014, 6:30-8:00pm

November 20, 2014, 6:30-8:00pm

For more information or to Register

Contact LaRae

(845) 473-4141 ext. 224

Infant & Toddler

August 4, 2014, 6:30-8:30pm

The Building Blocks to a Strong Language Foundation

\$10

Trainer: Rosemarie Lawton, Infant Toddler Specialist

Location: Dutchess Office, 70 Overocker Rd. Poughkeepsie

OCFS: 1, 3 **CDA:** 3, 6 **CBK:** 1, 4

Every time we tell simple stories, sing the clean-up song, and read a book to the children we are laying the groundwork for their language and literacy development. This training will provide an understanding of language development and strategies to help children start off with a strong language foundation.

Medication Administration

Training Location:

70 Overocker Road, Poughkeepsie 12603

August 23, 2014, 8:30-5:00pm

OCFS: 2, 4, 7 **Fee:** \$150

MAT is also available in an Independent Study format!



If you are interested in obtaining more information on MAT training, please call Liz Hargraves 845-473-4141 ext. 231

First Aid/CPR

Red Cross Registration

Hotline

1-888-522-1277

CPR Ed

(914) 497-8998

www.cpred.com

tom@cpred.com

Steven Celestri

(914) 906-8364

David Cosmo

(845) 224-6355

www.CPRDave.com

Health Quest

(845) 475-9742

www.healthquest.org



We Make House Calls!

Now is your chance to have any training of your choice! You tell us what type of training you want and we will bring it to you!

Frequently requested topics:

- Understanding Special Needs
- American with Disabilities Act Requirements
- Children's Behaviors
- Child Abuse and Maltreatment & Shaken Baby Syndrome
- Program Planning

On-site Training Fee:

2 hours of training
8 or more people: \$20/person
5-8 people: \$150.00

Contact Rosemarie

for more information:

(845) 473-4141 ext. 217



On-Line Training Opportunities

Our training courses are designed to help early childhood professionals complete annual training requirements and acquire required training hours for those seeking a Child Development Associate (CDA) credential, CDA credential renewal or in-service training. Our courses provide a variety of engaging topics designed specifically for the early childhood professional.

Courses are available 24 hours a day, 365 days a year!

Professional Childcare Development (2 Hours) • 2 hours of training of your choice.	\$35
Professional Childcare Development (3 Hours) • 3 hours of training of your choice.	\$45
Professional Childcare Development (5 Hours) • 5 Hours of training of your choice.	\$69
Professional Childcare Development (8 Hours) • 8 Hours of training of your choice.	\$85
Professional Childcare Development (10 Hours) • 10 Hours of training of your choice.	\$99
Professional Childcare Development (12 Hours) • 12 Hours of training of your choice.	\$109
Professional Childcare Development (15 Hours) • 15 Hours of training of your choice.	\$129
Professional Childcare Development (20 Hours) • 20 Hours of training of your choice.	\$149
45 Hour CDA Credential Renewal Training • 45 hours (4.5 CEUs) of certified online self-paced training	\$169

To Register:

smarthorizons.org/naccrra/ccdp

Got Questions?

1-800-261-6248

info@smarthorizons.org



**15 hours
of training!**

Summer Training Week

Dutchess Office, 70 Overocker Rd. Poughkeepsie

Minimum Enrollment: 10 Maximum Enrollment: 25

**All 9 OCFS
Topic Areas**

July 21, 2014, 6:30-9:30pm

Part 1: Separation Anxiety

Trainer: Juliette Doyle

OCFS: 1 **CDA:** 9 **CBK:** 1

This training includes how to recognize signs and symptoms of separation anxiety and when a child should be seen by a professional to treat symptoms.

Part 2: Child Abuse and Maltreatment

Trainer: Juliette Doyle

OCFS: 6, 8, 9 **CDA:** 13 **CBK:** 5

This training covers how to spot child maltreatment and abuse, identification and prevention, and what to do when a report needs to be made. Shaken baby syndrome will also be covered in this training with emphasis on prevention as well as creating a safe, optimal learning environment for the children in your care.

July 22, 2014, 6:30-9:30pm

Creative Early Childhood Environments

Trainer: Arlene Rider, PhD, NYS Credentialed Trainer

OCFS: 1, 3 **CDA:** 3, 7 **CBK:** 1, 4

This workshop will provide simple suggestions on how to enhance the learning environment in your program. Each participant will develop a plan for a program layout that offers children opportunities for exploration and discovery in a safe environment.



July 23, 2014, 6:30-9:30pm

Cooking with Preschoolers

Trainer: Darla Fulmer

OCFS: 2, 3 **CDA:** 2, 3 **CBK:** 4

This hands-on workshop will focus on the importance of cooking activities with young children and how to incorporate them into the various areas of your curriculum. Many recipes, including some multi-cultural ones will be included.

July 24, 2014, 6:30-9:30pm

Inclusion, Who Benefits?

Trainer: Renee Falanga-Brenner

OCFS: 1, 4, 7 **CDA:** 13 **CBK:** 1, 6

This training examines the Federal and State laws including: No Child Left Behind, The Education Law, IDEA, and Americans with Disability Act, and the Regulations of the NYS Education Commissioner that provide the definitions, services, and requirements and implementation of special education. Training also provides information on the advantages, barriers, and strategies for working with children who have delays and/or disabilities. The participant will learn how classroom environment, materials, and curriculum can be modified and adapted to accommodate all children. Information and strategies for establishing positive family-staff relationships are included.

July 25, 2014, 6:30-9:30pm

Update your Health Care Plan

Trainer: Liz Hargraves

OCFS: 2, 5, 7 **CDA:** 2, 11, 12 **CBK:** 5, 7

Bring your current health care plan to the training and work with Liz Hargraves to update it according to the new regulations.

Putnam Trainings

Tuesday, July 8, 2014, 6:30-8:30pm

Creative Art Experiences for Children

Trainer: Mary Schreiber, NYS Credentialed Trainer

Location: Lake Carmel Arts Center, Arts on The Lake, 640 Route 52, Kent Lakes, 10512

OCFS: 1, 3 **CDA:** 3 **CBK:** 1, 4

Do your "art" projects take you half an hour to prepare, but are completed by children in less than five minutes? Do parents stuff construction paper projects into backpacks and then surreptitiously throw them in the trash? In this training we will discuss the value of providing rich artistic experiences with children and the differences between "art" and "craft". Participants will learn to use artistic masterpieces to inspire artwork, to set up beautiful and functional art spaces, and to help children to express themselves in "the language of art" as they explore new materials and tools.

Wednesday, August 6, 2014, 6:30-8:30pm

Positive and Effective Behavior Management

Trainer: Mary Schreiber, NYS Credentialed Trainer

Location: St. Lawrence O'Toole Church, 31 Prospect Street · Brewster, NY 10509

OCFS: 3, 4 **CDA:** 3, 6, 10, 11 **CBK:** 1, 2

You recognize that "time outs" are not an effective strategy but you are perplexed about what else to do. Perhaps the management needs of one child are affecting the care of all the children in your group, or a child's family is sending "mixed messages". In this workshop we will discuss behavior management techniques that are respectful and effective. Participants can come with specific problems to discuss, and (using pseudonyms) we will brainstorm possible solutions and strategies. Participants can bring their regulatory "Behavior Management Plans" to this workshop for revision or discussion.

Get your Bachelor's Degree!

Tuesday, July 8, 2014, 6:30-8:00pm

SUNY Empire State College

Information Session

Trainer: Arlene Rider, PhD and Bill Robins

Location: Dutchess Office, 70 Overocker Rd. Poughkeepsie

OCFS: 5 **CDA:** 13 **CBK:** 6

In this session you will hear details about Empire State College's program and be able to ask questions about how you can earn college credits for your prior learning experience working in and/or owning an early childhood program! You will also learn about degree programs, study options, costs and financial aid, transfer credit and more. They will be discussing what SUNY Empire State College has to offer for their BA/BS programs with concentrations in Child Development, Early Childhood Studies or Early Childhood Educational and Administration studies. Training certificates for relevant OCFS topics are given at end of each college term!

STATE UNIVERSITY OF NEW YORK
 **EMPIRE STATE
COLLEGE**