

Annual Report *2011*

The Child Care Council of Dutchess and Putnam, Inc.



Connecting Communities and Children



January 1, 2011 through December 31, 2011

Mission Statement of the Child Care Council of Dutchess and Putnam, Inc.

The Child Care Council of Dutchess and Putnam, Inc. works to promote affordable and quality child care, provide information and support to families, and strengthen the early childhood workforce in Dutchess and Putnam Counties.



Vision of the Child Care Council of Dutchess and Putnam, Inc.

The vision of the Child Care Council of Dutchess & Putnam is to be the recognized, easily accessible and technologically advanced child care resource leader and advocate in the region, responding to the changing needs of families and children in a comprehensive, integrated manner.



How We Began

History Child Care Council of Dutchess and Putnam, Inc.

July 13, 1970

Dutchess County Legislature

Resolution No. 247—1970

Re: Creation of Dutchess County Child Development Commission.

Representatives Murphy & Economou offer the following and move its adoption:

WHEREAS, there is a need in all parts of Dutchess County for day care centers, and

WHEREAS, there should be a body to aid in the development of day care centers, and to coordinate the efforts of the many agencies that are now involved in operating day care centers, now, therefore, be it

RESOLVED, 1) That there shall be and is hereby created a Dutchess County Child Development Commission to consist of 25 members to be appointed by the Dutchess County Board of Representatives at least one member of which shall be from recommendations submitted by each of the following bodies:

- | | |
|---|--|
| 1. Dutchess County Health Department | 13. Dutchess County School Principals Association |
| 2. Dutchess County Department of Social Services | 14. Vassar College |
| 3. City of Poughkeepsie Department of Social Services | 15. Bennet College |
| 4. Dutchess County Community Chest & Council | 16. Housing Authority of the City of Poughkeepsie |
| 5. Dutchess County Social Workers Club | 17. Urban Renewal Agency of the City of Poughkeepsie |
| 6. Model City Agency of the City of Poughkeepsie | 18. Chamber of Commerce |
| 7. Dutchess County Youth Board | 19. League of Women Voters |
| 8. Dutchess County Council of Churches | 20. Board of Representatives |
| 9. Catholic Charties | 21. Parents League |
| 10. United Council of Jews | 22. Junior League of Greater Poughkeepsie |
| 11. Dutchess County Offices for Economic Opportunity | 23. Mid Hudson Industrial Association |
| 12. Neighborhood Services Organizations | |

2) Among the functions, but not limited to them, shall be the following:

a. To explore the needs for day care centers throughout the County with regard to the number of children requiring day care services, their geographic distribution, and the specific programs necessary.

b. To be a catalyst in encouraging private and public initiative and in developing day care centers. In aiding private and public groups to develop centers, and in coordination the efforts of these various groups in order to provide full services and to avoid duplication.

c. To work out plans with local colleges to train teachers, nurses, social workers and para-professionals for day care purposes and to organize in-service training for day care center personnel.

d. To evaluate centers and to help them to improve their services.

e. To conduct appropriate research and studies necessary or desirable

f. To apply for funds under private, or local or state and national programs,

Discussion of the foregoing resolution resulted as follows:

On motion by Representative Murphy, duly seconded by Representative Bruno and carried, the rules were suspended so that Hilde Bohmer, President of the Day Care Council of Dutchess County could speak.

Mrs. Bohmer came before the Board with a request that they endorse the Day Care Movement. She claimed that coordination of this Program was extremely important and with the Board's help the project could be a successful and helpful organization. She claimed that the Day Care Program accommodated both the rich and poor children of the County.

Mrs. Murphy stated that the County would not have to support the Program financially because State and Federal funds would do that. The County may have to pay for office space and a secretary.

Mrs. Bohmer claimed that the City of Poughkeepsie and the State Social Services Department are going to help them organize. Mr. John Battistoni of the Dutchess County Social Services Department is in favor of this program and is on the Day Care Committee.

How We Have Grown

1970

The Dutchess County Legislature establishes the Dutchess County Child Development Committee. There is one secretary as the only paid employee. There are five day care centers in Dutchess County.

1975

The Child Development Committee is a founding member of the N.Y.S. Child Care Coordinating Council (now known as the Early Care and Learning Council). There are 20 day care centers.

1980

The Child Development Committee is named as an Advisory Committee to Dutchess County government. There are 1.5 employees.

1981-1984

The Dutchess Council Child Development Council is formed. The Council is established as the Child Care Resource and Referral Service for Dutchess County. The Council administers the Child Care Food Program for family day care providers. There are 29 licensed day care centers and 30 family day care homes. Staff increases from two to six.

1986

The Council becomes a member agency of United Way. There are 11 employees.

1991-1995

The Council becomes the N.Y. S. Registrar for family day care homes. Through a contract with the Dutchess County Department of Health, the Council employs two Early Intervention Initial Service Coordinators. Staff grows to 15.

1998

The Council's on-site Resource Lending Library is made possible with funding from IBM and the American Business Collaboration.

1999

The Council becomes the School Age Registrar for Dutchess and Ulster Counties. The Early Intervention employees move from County office space to Collegeview Avenue, creating the Council's first satellite office. There are 17 employees.

2000

The new name is official: Child Care Council of Dutchess, Inc. There are 47 day care centers, 75 group family day care homes, 208 family day care homes, and 29 school age programs.

2002

The Council hires a Spanish-speaking translator/interpreter for Early Intervention. The Office of Children and Family Services (OCFS) provides funding for Regional Infant/Toddler Technical Assistance Centers. The Council participates in an OCFS workgroup to develop a Child Care Resource and Referral performance-based contract. The Council hosts a N.Y.S. School Age Care Credential Course at Ulster Community College. The number of family day care homes declines, due to more stringent regulatory requirements. There are 50 day care centers, 70 group family day care homes, 156 family day care homes, and 34 school age programs.

2004

With support from Senator Saland, the Council purchases a van and opens its Mobile Resource Lending Library. The Council hires a Health Care Consultant to aid in the implementation of the new OCFS regulations on the administration of medication to children in care. The Council's first Champions of Child Care recognition event is a resounding success.

2006

The Council becomes the Enrollment Agency for Legally Exempt Child Care for Dutchess and Putnam counties. Upon the request of OCFS, the Council's Board of Directors votes unanimously to provide services in Putnam County, to include: resource and referral, registration, food program administration, and child care subsidy administration. Services in Putnam County begin in February.

2007

The Council is awarded Best Practices Certification by the N.Y.S. Child Care Coordinating Council (now the Early Care and Learning Council). The name change is official: Child Care Council of Dutchess and Putnam, Inc.

2008

The N.Y.S. contracts for resource and referral and registration are strictly performance-based. The Council unveils its Strategic Plan for 2009 – 2011.

2009

The Council's website is redesigned. The Council begins the two-year National Association of Child Care Resource and Referral Association's Quality Assurance process.

2010

Distance Learning classes are developed by The Council. Child Day Care scholarships are funded by Dyson Foundation.

2011

The Council hosts first annual Legislative Breakfast. Council Cluster Meetings begin. Parent outreach activities begin. The Council begins web-based referrals.

How We Help

The Child Care Council of Dutchess and Putnam, Inc. and child care providers of Dutchess and Putnam counties working together to make an impact on the child care community.

Economic Impact:

- In 2010, the Child Care Council of Dutchess and Putnam, Inc. spent **\$129,560 on goods and services in Dutchess County.**
- There are approximately **1,465 employed** in Dutchess County in the early care and education workforce.
- Approximately **63%** of Child Care Council staff reside in Dutchess County, **21%** in Putnam County, and **16%** in Ulster County.
- Regulated early care and education programs (day care centers, family and group family child care, school age child care, Head Start, and Universal Pre-Kindergarten) **provide care for a minimum of 16,000** children in Dutchess and Putnam counties so that parents can work or go to school
- Approximately **700 volunteer hours annually** support the work of the Child Care Council.

Census Information 2010:

- Important information from the Census Report:

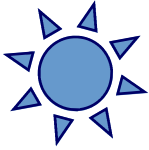
Dutchess County

Total Population	297,488
Total Number of Households (includes single head of household)	107,965
Total Number of Children under age 5	15,239
Total Number of Children ages 5-9	17,650
Total Number of Children ages 10-14	19,696

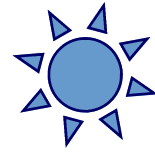
Putnam County

Total Population	99,710
Total Number of Households (includes single head of household)	38,224
Total Number of Children under age 5	4,814
Total Number of Children ages 5-9	5,089
Total Number of Children 10-15	7,774

What We Do



Programs At A Glance ~

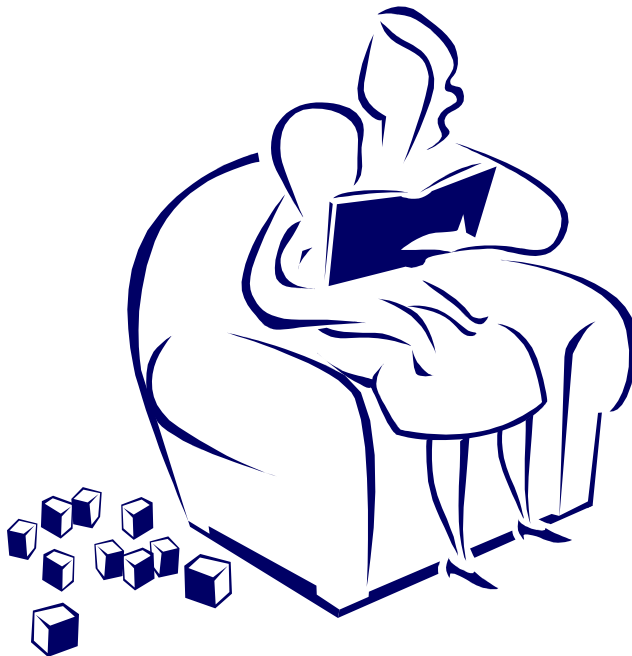


Child Care Resource & Referral (Dutchess & Putnam)

- Provides information to parents on locating child care, consumer education, referrals, subsidies, services for families
- Recruits child care providers, provides start-up information and technical assistance in meeting regulatory requirements
- Provides the Community with education on child care issues and current data needed in planning for community services
- Supports employers in planning, implementing and providing employee child care services
- In 2010 the following groups of consumers were served:

1,236 families received referrals to child care programs.

1,581 children were referred to child care programs.



Child Care Registration (Dutchess & Putnam)

- Provides supervision of **88** family day care homes in Dutchess and **26** in Putnam
- Provides supervision of **29** school age programs in Dutchess, and **7** in Putnam
- Includes processing new and renewal applications, monitoring and inspecting programs, providing technical assistance and investigating complaints
- There were a total of **10,093 slots** for child care in day care centers, group family day care homes, family day care homes, and school age programs.

Child and Adult Care Food Program (Dutchess & Putnam)

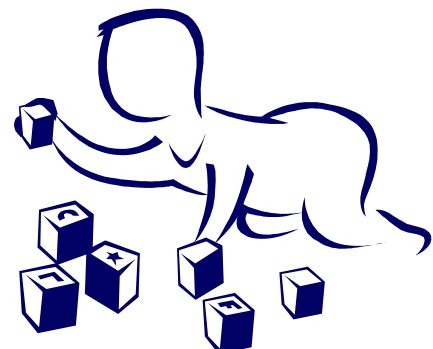
- Supports group and family day care providers in providing nutritious, healthful meals and snacks to children in their care
- Manages the CACFP federal reimbursement program for participating providers
- Reimbursed **\$335,202.** to Child Care Providers for nutritious meals

Health Care Consultancy Services (Dutchess & Putnam)

- Registered Nurse on staff conducts training classes on health issues for child care providers
- Reviews and approves health care plans for medication administration
- There are **104** programs certified to give medications.

Day Care Subsidy Administration (Putnam)

- Manages the subsidized day care program



Legally Exempt Enrollment (Dutchess & Putnam)

- Legally exempt providers deliver informal, non-registered child care for relatives and a limited number of non-relative children who receive subsidy from the parents' local Department of Social Services.
- As the Enrollment Agency, the Council is responsible for reviewing and approving enrollment applications, as well as visiting a percentage of the legally exempt homes to inspect basic health and safety compliance.
- Enrollment Specialists have processed approximately 2000 applications.
- As of November 2011, the number of legally exempt providers that have a **payable status in Dutchess and Putnam counties is: 340.**

Professional Development Program (Dutchess & Putnam)

1216 child care providers received training from the Child Care Council.

- Provides training and educational opportunities for child care providers in Dutchess and Putnam counties.
- Has provided **four** trainings onsite for Day Care Centers and School Age Programs.
- Had developed **10** distance learning classes.
- Serves as a host agency for the New York State School Age Care Credential.

Quality Improvement Program (Dutchess & Putnam)

- Has helped **27** family and group family providers in Dutchess and Putnam counties by offering onsite technical assistance to improve the quality of programming.
- Has provided **\$26,419.** in grants to family and group providers in Dutchess and Putnam counties for Quality Improvement.

Putnam Outreach (Putnam)

- Has created a **Family Day Care Provider Network.**
- Has created an **Infant/Toddler Provider Network.**
- Has created a **School Age Child Care Program Network.**
- Participated in **five** visibility events.

Dutchess Outreach (Dutchess)

- Council staff participated in **12** visibility events distributing 2000 flyers, brochures, magnets and pens to agencies, school districts, parents and businesses to educate parents and caregivers about quality child care options.

Child Care Scholarship Program (Dutchess)

- Distributed **\$53,327.** in scholarship monies to help offset the cost of child care for those parents who don't qualify for subsidy

Regional Infant-Toddler Technical Assistance Center (Dutchess, Putnam & Ulster)

- Provides training and technical assistance to providers who care for infants and toddlers

Resource Lending Library (Dutchess & Putnam)

- Onsite lending library of toys, equipment, teaching units and professional resources

Mobile Resource Lending Library (Dutchess)

- Council van stocked with toys, games, teaching units, children's books, and professional resources to enhance programs

Statistics

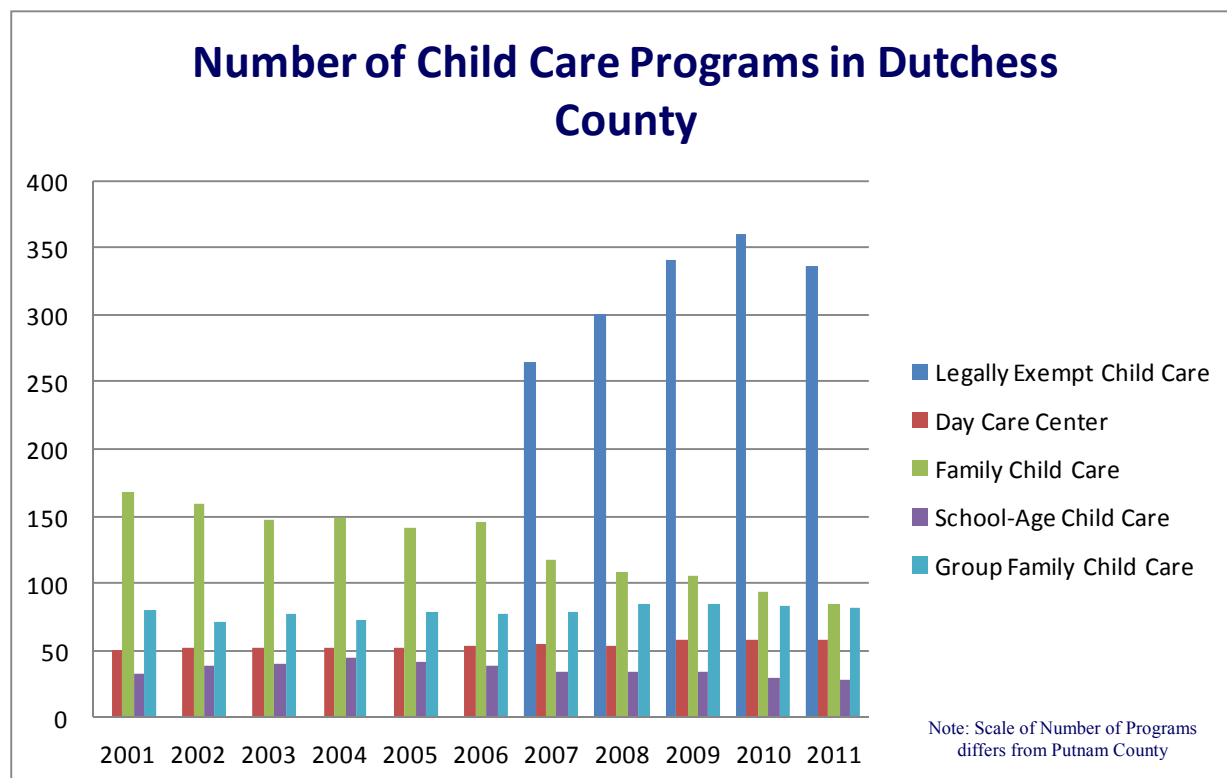
Number of:	Dutchess	Putnam	Combined Totals
Day Care Centers	58	24	82
Group Family Day Care	81	21	102
Family Day Care	84	24	108
School Age Child Care	28	11	39
Legally Exempt Child Care	337	8	345
Total Employees in Programs*	1338	512	1850
Total Children in Care*	7292	2434	10,166
Total Parents*			

* Not including Legally Exempt Child Care

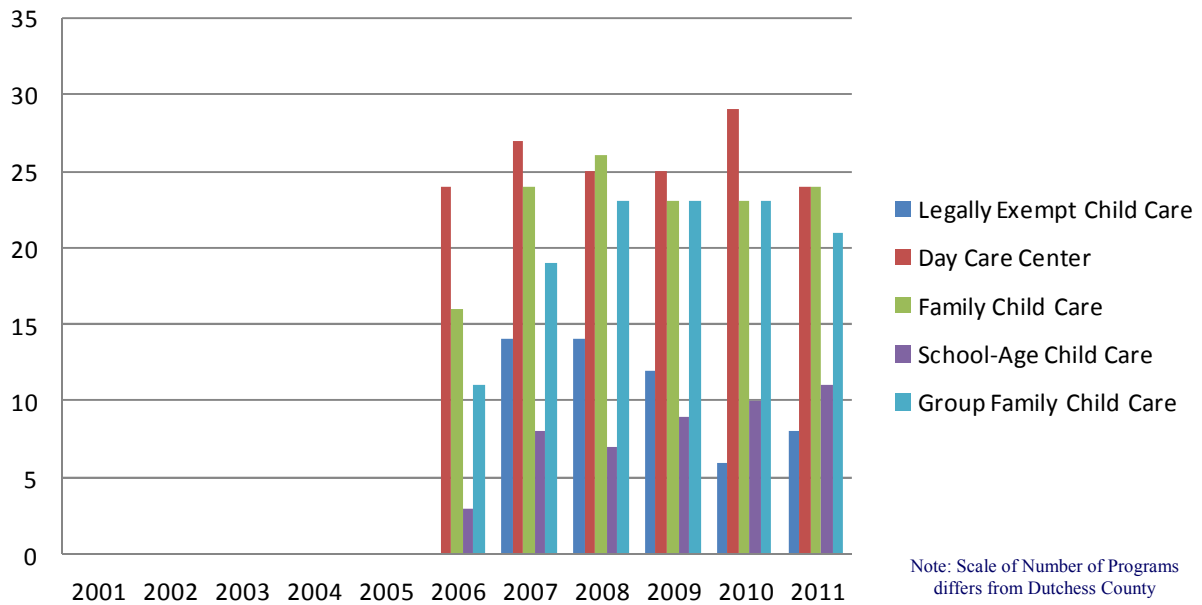
2010 Child Care Requests	Dutchess	Putnam	Combined Totals
Number of Families	928	92	1020
Number of Children	1181	112	1293

Statistics prepared by the Child Care Council of Dutchess and Putnam, Inc.

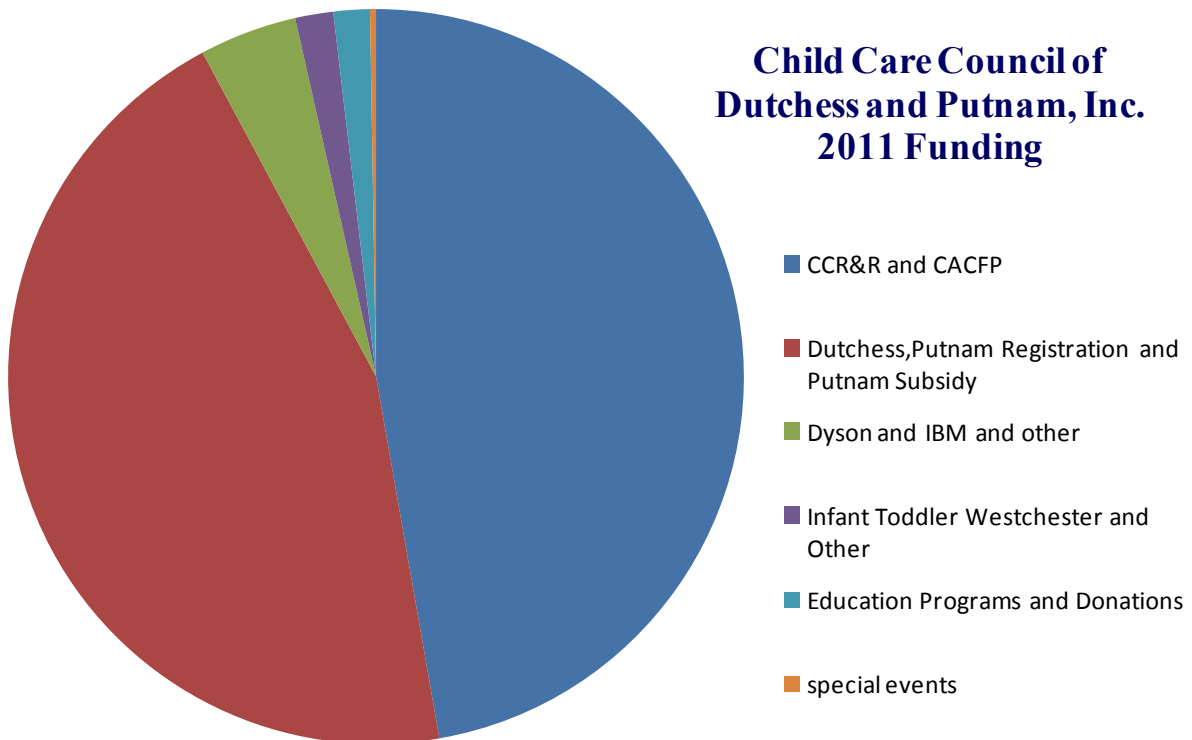
June 2011



Number of Child Care Programs in Putnam County



Child Care Council of Dutchess and Putnam, Inc. 2011 Funding



CHILD CARE COUNCIL OF DUTCHESS, INC.
STATEMENTS OF FINANCIAL POSITION
DECEMBER 31, 2010 AND 2009
“Draft Only”

	<u>2010</u>	<u>2009</u>
ASSETS		
Cash	\$ 402,973	\$ 528,457
Accounts Receivable	445,281	314,698
Other Assets	13,320	13,322
Investments	-	-
Property and Equipment, net of accumulated depreciation	28,273	38,595
Total Assets	<u>\$ 889,847</u>	<u>\$ 895,072</u>
LIABILITIES AND NET ASSETS		
Accounts Payable	\$ 73,763	\$ 75,334
Refundable Advances	<u>69,147</u>	<u>89,259</u>
Total Liabilities	142,910	164,592
NET ASSETS		
Unrestricted	446,471	495,503
Temp Restricted Net Assets	<u>300,466</u>	<u>234,977</u>
** Total Liabilities and Net Assets	<u>\$ 889,847</u>	<u>\$ 895,072</u>

The Child Care Council is committed to increasing the quality of child care in the area by providing resources to the community. These services are made possible through the generous support of:

PRIVATE SOURCES

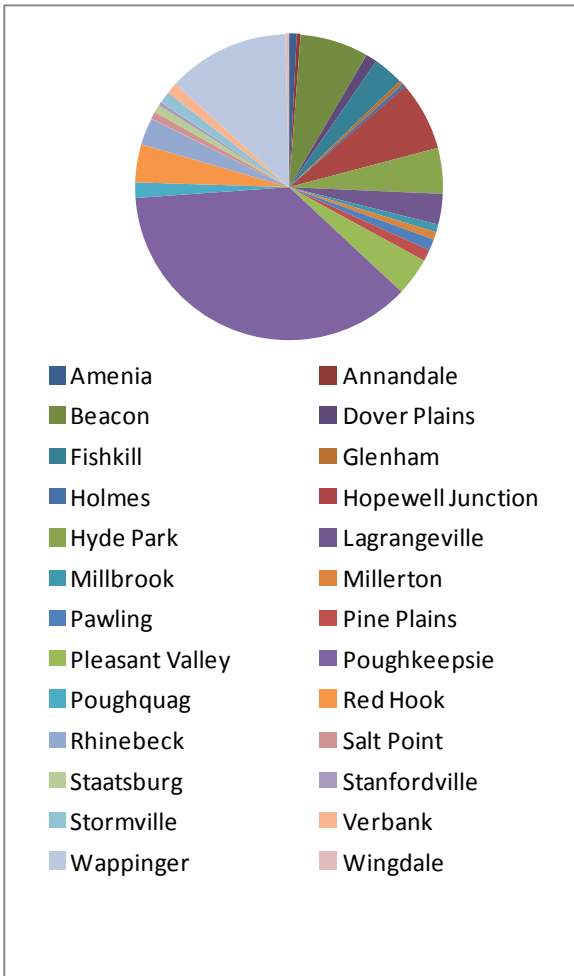
Ceridian
Early Care And Learning Council
Abilities First
Child Care Council of Westchester
Dyson Foundation
IBM
Work/Family Directions
United Way of Dutchess County

PUBLIC SOURCES

Dutchess County Government
Dutchess County Dept. of Social Services
NYS Department of Health
Office of Children and Family
Services
State University of NY Training Strategies Group
Putnam County Dept. of Social Services

MEMBERSHIPS & TRAINING FEES

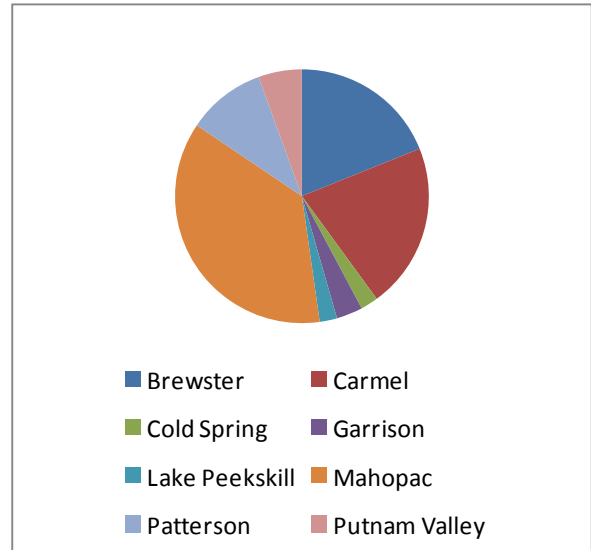
Total Number of Providers in Dutchess County



	Total Providers	Percentage of County
Amenia	2	1%
Annandale	1	1%
Beacon	18	7%
Dover Plains	3	1%
Fishkill	8	3%
Glenham	1	1%
Holmes	1	1%
Hopewell Junction	18	7%
Hyde Park	12	5%
Lagrangeville	8	3%
Millbrook	2	1%
Millerton	2	1%
Pawling	3	1%
Pine Plains	3	1%
Pleasant Valley	10	4%
Poughkeepsie	92	37%
Poughquag	4	2%
Red Hook	10	4%
Rhinebeck	7	3%
Salt Point	2	1%
Staatsburg	2	1%
Stanfordville	1	1%
Stormville	3	1%
Verbank	3	1%
Wappinger	32	13%
Wingdale	1	1%
TOTAL	249	100%

Total Number of Providers in Putnam County

	Total Providers	Percentage of County
Brewster	17	19%
Carmel	19	21%
Cold Spring	2	2%
Garrison	3	3%
Lake Peekskill	2	2%
Mahopac	33	37%
Patterson	9	10%
Putnam Valley	5	6%
Total	90	100%



Our Collaborators

In order to provide the highest quality service and the most diverse programs, the Child Care Council is pleased to be able to work together with many community organizations and businesses.

- Task Force on Child Abuse and Neglect
- Local Early Intervention Coordinating Council
- American Red Cross
- Dutchess County Department of Health
- Mid-Hudson Infant/ Toddler Coalition
- Abilities First
- Chamber of Commerce of Carmel
- Dutchess county Chamber of Commerce
- Children's Medical Group
- Astor Programs for Children & Family Services
- Cornell Cooperative Extension
- Dutchess County Department of Social Services
- Nutrition Advisory Committee of Dutchess County
- Dutchess County Community Action Agency
- Vassar Brothers Medical Center
- Child Care Council of Westchester
- Dutchess Community College
- Putnam County Department of Social Services
- Putnam Early Education Partnerships
- Putnam County Department of Health
- Dutchess County Coalition of Non-Profits
- Early Care and Learning Council
- United Way of the Mid-Hudson Valley
- Dyson Foundation
- IBM Work/Family Directions
- Mid-Hudson Children's Museum
- Family Child Care Network

2011 Champion Donors of the Council

Abilities First	Family Services	Linda MacIsaac
Rita Acerno	Dina Fata	Marist College
Emily Albers	Kim Fischer	Marshall & Sterling
Bard Community Children's Center	Pauline Fredrickson	Scott Mehlberg
Kristen L. Bo	Connie Gianserra	Nancy & Lee Miringoff
Donna Bolner	Meredith Gould	Mizzentop Day School
Nicole Boneli	Cathleen Greenan	Linda Monkman
Bright Beginnings Preschool	Tammy Hagon	Frances Montero
Tracey Buckley	Deborah Haradon	Kathleen M. Murphy
Grace Caddell	Susan Harney	The Nurtury Montessori School
Tom Cataldo	Heart 2 Heart Child Care	Loretto Padilla
Children's Medical Group	Kelly A. Hertica	Rosemarie Palmeri
Diana Colello	Joe Incoronato	Barbara Passaro
Community Family Development	Ivonne Iannelli	Sophia Pertesis
Tina & Michael Cottrell	Rebecca Jevons-Marlin	Pine Grove Country Daycare
Country Knolls Child Center	Kim Jornov	Peggy Ranieri
Mary Courtney	Kiddie Academy of Fishkill	Rhinebeck Savings Bank
Joanne Cuccia	Stephanie L. King	Debra Rhodes
Judy DePippo	Jane Korn	Judy Robbins
Sarah Dickinson	Diane Labenski	Senator Saland
Linda Dunlap	Cindy Latino	Annmarie Santaniello
Ecosystems	Catherine LeonForte	Brook A. Schimmel
Lori Elting	Howard Lynne	Anne-Catherine Schmitt
Family Child Care Network	Betsy MacDonald	Arlene Selman

Congratulations to our 2011 Award Winners!

Putnam County

Putnam County Preschool of the Year: Meeting Special Needs and Learning Differences: P.A.R.C.
Unique Curriculum: Learning Through Nature: Green Chimney's Children's Services, Inc. - Natures Nursery
Putnam County Staff of the Year: Stage III Daycare, Inc.
Putnam County Center of the Year: Over the Rainbow Learning Center
Professional Development Award: Supporting Child Care Providers:
Putnam County Family Child Care Providers' Group



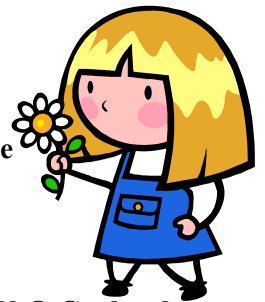
Dutchess County

Family Day Care Programs

Home Away From Home: Brook Schimmel, Brook's Family Day Care, LTD
Growing Together: Nancy House, Grammy's Country Daycare
Staying in Touch: Cris Lemieux, Inspire Daycare

Group Family Day Care Programs

Life Line Award: Bella's Group Family Daycare
Dutchess County Group Family Day Care of the Year: Victorian Teddy Bears/Cedar Tree Preschool
Meeting Family Needs: The Children's Playhouse, Inc.
Child Care Provider of the Year: Marisol Hoffmann, Feels Like Home Childcare, Inc.
Coming to the Rescue: Cedar Street Day Care
Quest for Excellence: Gwen Freeman, Little Peoples Daycare
Hope for the Future: Sweet Dreams and Friends Day Care
Dynamic Duo: Karen Isidori and Sarah Elmashad, Karen's Kiddie Care
Best Kept Secret: Wish Upon a Star Childcare, Inc.
Strengthening Families One Child at a Time: Teddy Bear Playhouse Day Care
Job Well Done: Peek A Boo Day Care



School Age Child Care Programs

Exceptional School Age Child Care Director: Marcia Smoot, The YMCA of Newburgh, NY @ Gayhead

Nursery School Program

Dutchess County Nursery School of the Year: Abigail Lundquist Botstein Nursery School @ Bard College

Day Care Centers

Dutchess County Center of the Year: Infant Toddler Center @ Vassar College
Dutchess County Staff of the Year: "Soup to Nuts—Awesome": Saint Francis Hospital Day Care Center
Right From the Start: Milene Olmo and Jennifer Kingman, Poughkeepsie Child Development Center, Inc.
Beyond the Call of Duty: Gary Taylor, Northern Dutchess Day Care Center
Creative Team: Ms. Danielle, Ms. Melissa, Ms. Monika, Ms. Regina, Creative Kids Childcare
Going the Extra Mile: Neighborhood Day Care Services
Teacher Extraordinaire: Learning Through Play: Tiffany Cratty, Child Care by Valerie
Warming Our Hearts: Young Hearts Day Care, LLC
Peace of Mind: Tots-N-Us



2011 Education Awards

Congratulations to the following persons who have achieved an Education Milestone during 2010.
We salute your efforts to further your education to enhance what you offer to children and their families.

Danielle Armstrong
Northern Dutchess Day Care Center
Master's Degree in Early Childhood
Literacy Education (B-6)

Jessica Fulton
Young Hearts Day Care & Preschool
Master's Degree in Education

Kristen McKinley
Over the Rainbow Learning Center
Master's Degree in Early Childhood and Special Education

Amanda O'Connor
Kiddie Academy of Fishkill
Associates Degree in Science and Childhood Education

Heather Stinson
Honeybee Child Care
Associates in Applied Science Degree in Early Childhood
Education

Danielle Place
Creative Kids Childcare
NYSAEYC Children's Program Administrator Credential

Tracey Burger
Small World Child Care
New York State School-Age Care Credential

Yolanda Coleman
Green Chimneys Childrens Services
New York State School-Age Care Credential

Bonnie Conklin
YMCA of Central & Northern Westchester After School
Programs in Westchester
New York State School-Age Care Credential

Kimberly Faison
Martin Luther King Cultural Center
New York State School-Age Care Credential

Suzanne Roe
Family Services, Inc.
New York State School-Age Care Credential

Cassandra Sands
Green Chimneys Childrens Services
New York State School-Age Care Credential

Annmarie Santaniello
Putnam Valley Parks and Recreation
New York State School-Age Care Credential

Marcie Smoot
YMCA of Newburgh, Dutchess Site
New York State School-Age Care Credential



Jill Acerno
Over the Rainbow Learning Center
Bachelor's Degree in Social Work

Valerie L. Andrews
Child Care By Valerie, Inc.
Bachelor of Science in Organizational Leadership & Communication

Kristina Mang
Creative Kids Childcare
Bachelor of Arts in English Teaching Grades 1—6 Special
Education

Ann McKinley
Over the Rainbow Learning Center
Bachelor's Degree in Early Education

Erica Saxton
Kiddie Academy of Fishkill
Bachelor's Degree
Child & Society with a Concentration in Education

Jennifer Strang
Honeybee Child Care
Bachelor's Degree in Early Childhood/Special Education

Jennifer Anderson
Over the Rainbow Learning Center
Child Development Associate

Patricia Brett
Kidz Country Learning Day Care Center
Child Development Associate

Alicia Canfield
Kidz Country Learning Day Care Center
Child Development Associate

Albert Cuomo
Over the Rainbow Learning Center
Child Development Associate

Kelly Rose
Young Hearts Day Care & Preschool
Child Development Associate

Jessica Woelfle
Over the Rainbow Learning Center
Child Development Associate

Hollie Morse
Saint Francis Hospital Learning Links Day Care Center
Child Development Associate Recertification

The Children's Corner Group Family Day Care
Reaccreditation



Child Care Council of Dutchess and Putnam, Inc.

Staff, 2011

Jeanne Wagner
Executive Director

Marion Eagen
Assistant Director

Nancy Owen
Clerk

Peggy Paparone
Registration Supervisor

Pat Isbirian
Parent Counselor

Liz Hargraves
Health Care Consultant

Karen Walsh
Legally Exempt Enrollment Coordinator

Barbara Garbarino
Putnam County Family Day Care/School Age Registrar

Melinda Cirillo
Financial Manager

Lorraine Scuccimarra
CACFP Coordinator

Stacey Rosborough
Assistant Registration Supervisor

Rosemarie Dehn
Training Coordinator

Kim Wolfe
Putnam County Day Care Services Administrator

Dawn Haecker
Putnam County Day Care Services Assistant

Carol Taylor
Family Day Care Registrar

Mary Schreiber
Putnam County Community Outreach

Donna Thomas
Infant Toddler Specialist

LaRae Fasano
Family Day Care Registrar

Darla Fulmer
Family Day Care/School Age Registrar

Board of Directors, 2011

Officers

Diane Labenski: *Chair*

Linda Dunlap, Marist College: *Vice Chair*

Linda Monkman,
Dutchess County Department of Mental Hygiene:
Secretary

Howard Lynne, Member at Large: *Treasurer*

Deborah Haradon,
National Association of Social Workers: *Past Chair*

Linda MacIsaac,
City of Poughkeepsie Office of Community Development: *Member at Large*

Jeanne Wagner,
Child Care Council of Dutchess and Putnam, Inc.:
Executive Director

Members

Rita Acerno: *Child Care Provider*

Emily Albers: *Member at Large*

Nicole Bonelli: *Vassar College*

Grace Caddell: *Astor Early Childhood Programs Head Start, Wingdale*

Tom Cataldo: *Member at Large*

Cecilia Cook: *Dutchess County Regional Chamber of Commerce*

Tina Cottrell: *Parent*

Laureann Elting: *Rhinebeck Savings Bank*

Edward Glisson: *Mid-Hudson Children's Museum*

Cathleen Greenan: *Dutchess Community College*

Jay Landolfi: *Dutchess County Department of Health*

Scott Mehlberg: *Member at Large*

Nancy Miringoff: *Member at Large*

Kathleen Murphy: *The Center for the Prevention of Child Abuse*

Barbara Swanson: *Dutchess County Department of Social Services*

Carol Zaccara: *Member at Large*

Joseph Incoronato: *Dutchess County Legislature*

Donna Bolner: *Dutchess County Legislature*

Quality Matters

Taken from: Fight Crime: Invest in Kids New York



Early care and education programs help kids get the right start in life and avoid future crime, but programs must be high quality to make this difference in kids' lives.

Early Education Cuts Crime: In addition to tough policing, prosecution and corrections, we also need to invest in programs that prevent kids from becoming criminals in the first place. As law enforcement leaders, we know the research shows that early investments in the care and education of young children can make all New Yorkers safer. For example:

- A long-term study of Michigan's Perry Preschool • found that at-risk children who did not participate in the high-quality program were five times more likely to be chronic offenders by age 27 than children who did attend.
- At-risk kids left out of Chicago's Child-Parent • Centers were 70 percent more likely to be arrested for a violent crime by age 18, according to a study published in the *Journal of the American Medical Association*.

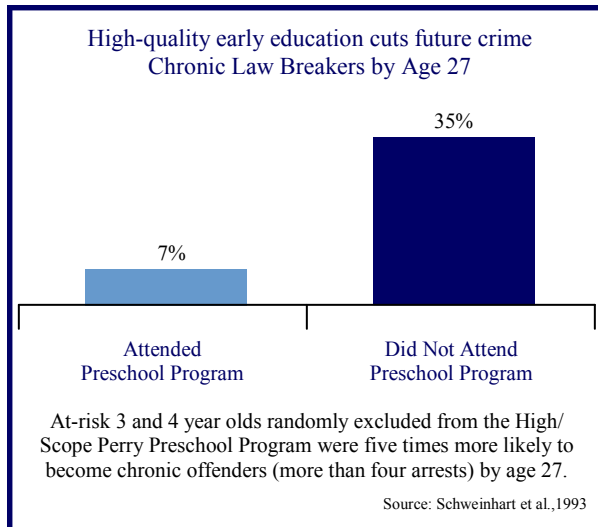
High-Quality Programs Get Results: These early care and education programs delivered impressive results because they were high-quality programs. Unfortunately, too many early care and education programs are not high quality. Past national estimates suggest that only a fraction of child care programs provide high-

quality care. Currently, New York has no uniform standards for the different early care and education environments throughout the state and therefore there is no systematic way to ensure that programs are high quality or on their way to becoming high quality.

QUALITYstarsNY Rating System: New York State has an opportunity to improve the quality of early care and education programs by adopting the Quality Rating Improvement System (QRIS) known as QUALITYstarsNY. This system encourages early care and education program providers to participate in a voluntary review process based on a number of quality indicators used to rate the program. The rating system aims to:

- Monitor the quality of early care and education • programs;
- Help parents find programs rated as high quality; and•
- Provide technical assistance and incentives to improve • program quality.

Research from other states shows this can work. To make sure more New York children receive high-quality care and education in their early years — the help they need to succeed in life and avoid later crime and violence — we call on state policy-makers to enact this promising system for improving quality in early care and education programs across the state.



“Early education isn’t about just getting kids into any kind of program. It has to be high quality for the investment to pay off. If we provide at-risk kids with opportunities to participate in high-quality pre-k programs, we will significantly reduce later crime.”

Chief John Tedesco
Troy, New York



Fast Facts on Early Care and Education in New York State

- There are over 1.2 million children under age 5 in New York State.
 - Over 870,000 children under age 6 in New York have all parents (one parent in single-parent families, and both in two-parent families) in the workforce. Most of these children spend time in some form of non-parental child care each week, in child care centers, family child care homes, with nannies or in preschool programs.
 - New York State currently has no uniform standards across early care and education program environments to ensure that all programs across the state are evaluated in the same way.
- QUALITYstarsNY would ensure that the state has the same quality expectations for all early care and education programs regardless of their setting.

“...it is a natural reaction to cut spending when faced with a budget deficit. Make no mistake, reducing spending in some areas is necessary and warranted. However, when one has dug themselves into a hole, the solution is not to stop digging as much as to start digging the hand and toe holds that facilitate climbing out. Investing in early childhood education is that hand and toe hold.”

- Prof. James Heckman,
Nobel Prize-winning economist



The Child Care Council of Dutchess and Putnam, Inc.

Dutchess County Office:

70 Overocker Road
Poughkeepsie, NY 12601
Phone: (845) 473-4141
Fax: (845) 473-4161

Putnam County Office:

Office Location:
110 Old Route 6, Building #3
Carmel, NY 10512

Mailing Address
P.O. Box 1029
Carmel, NY 10512
Phone: (845) 808-1659
Fax: (845) 225-1279

www.childcaredutchess.org